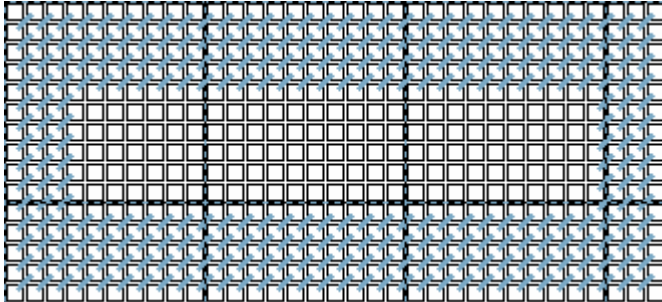


Business Card Holder

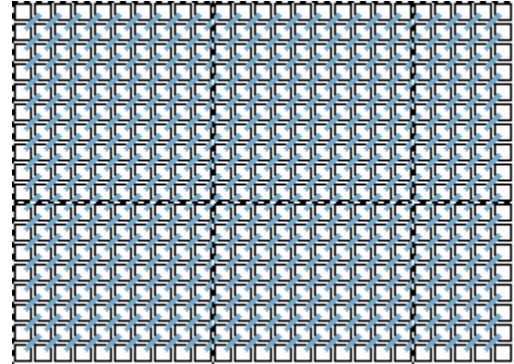
Bottom

Size: 33 holes wide by 15 holes high



Back

Size: 25 holes wide by 18 holes high

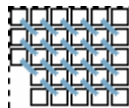


Sides:

Size: 6 holes wide by 5 holes high (cut 2)

Left

Right



Front:

Size: 25 holes wide by 5 holes high



Stitch as charted (or as desired).

Attach the Sides to the Front, using whipstitch (or overcast stitch) to attach the front edges (straight edges).
Overcast the top edges of the front and sides.

Attach the Front-Sides piece to the Bottom using overcast stitches (carefully matching the bottom edges) to the outer unstitched edges of the Bottom. (See black stitches on the image below.)

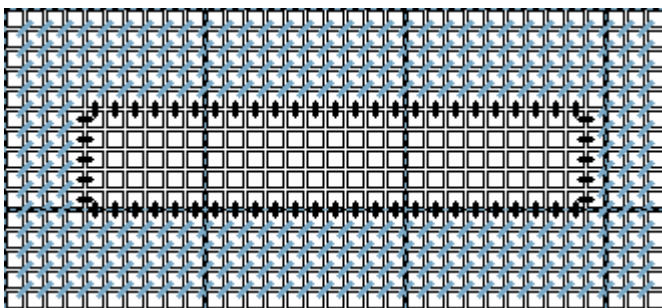
Attach the Back to the Bottom, with whipstitch or overcast stitch,

attach the bottom edge of the Back to the outer unstitched edges of the Bottom.

Then overcast the Sides to the Back, continuing to overcast the rest of the Back piece.

(Suggestion: Start with one Side, overcast up, over the top of the Back piece, then down to the other Side piece.)

Lastly, overcast the outer edges of the Bottom piece.



Note:

Putting this project together requires
patience and precision!!

No hurries!