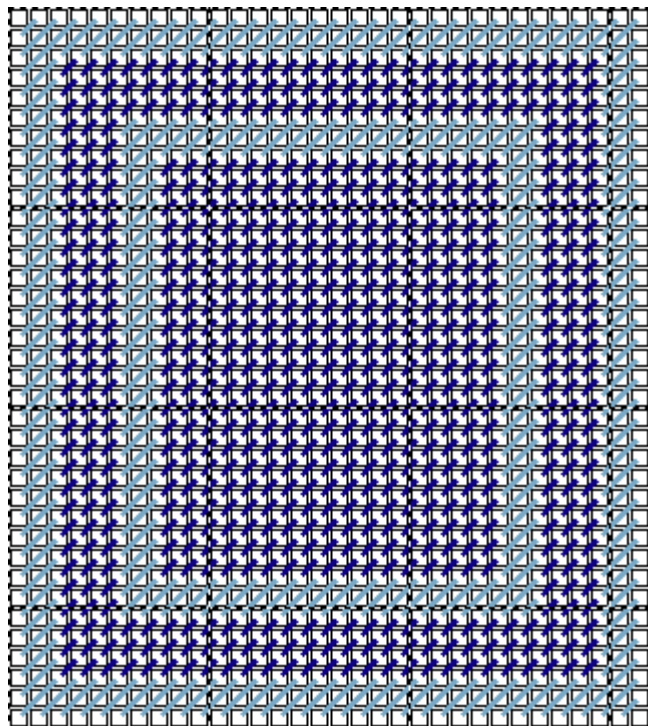


Boutique Tissue Box Cover

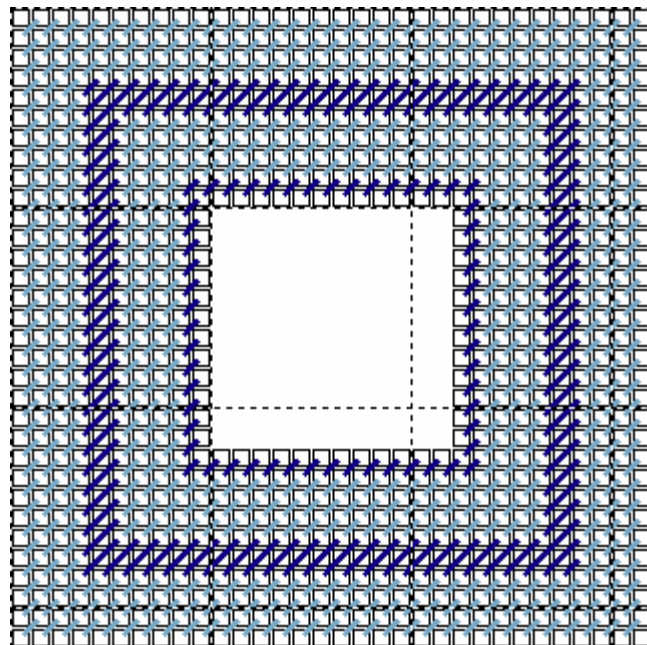
Side:

Size: 32 holes wide by 26 holes high (cut 4)



Top:

Size: 32 holes wide by 32 holes high



Stitch pieces with desired colors (feel free to modify the pattern).

Overcast the opening in the top with desired color.

Attach each side to the top using whipstitch or overcast stitch and desired colors.

Overcast each side pair together. Then overcast the bottom edges.

(Some crafters prefer to attach the 4 sides together first, then attach the top.)