

Bethlehem Boutique Tissue Box Cover

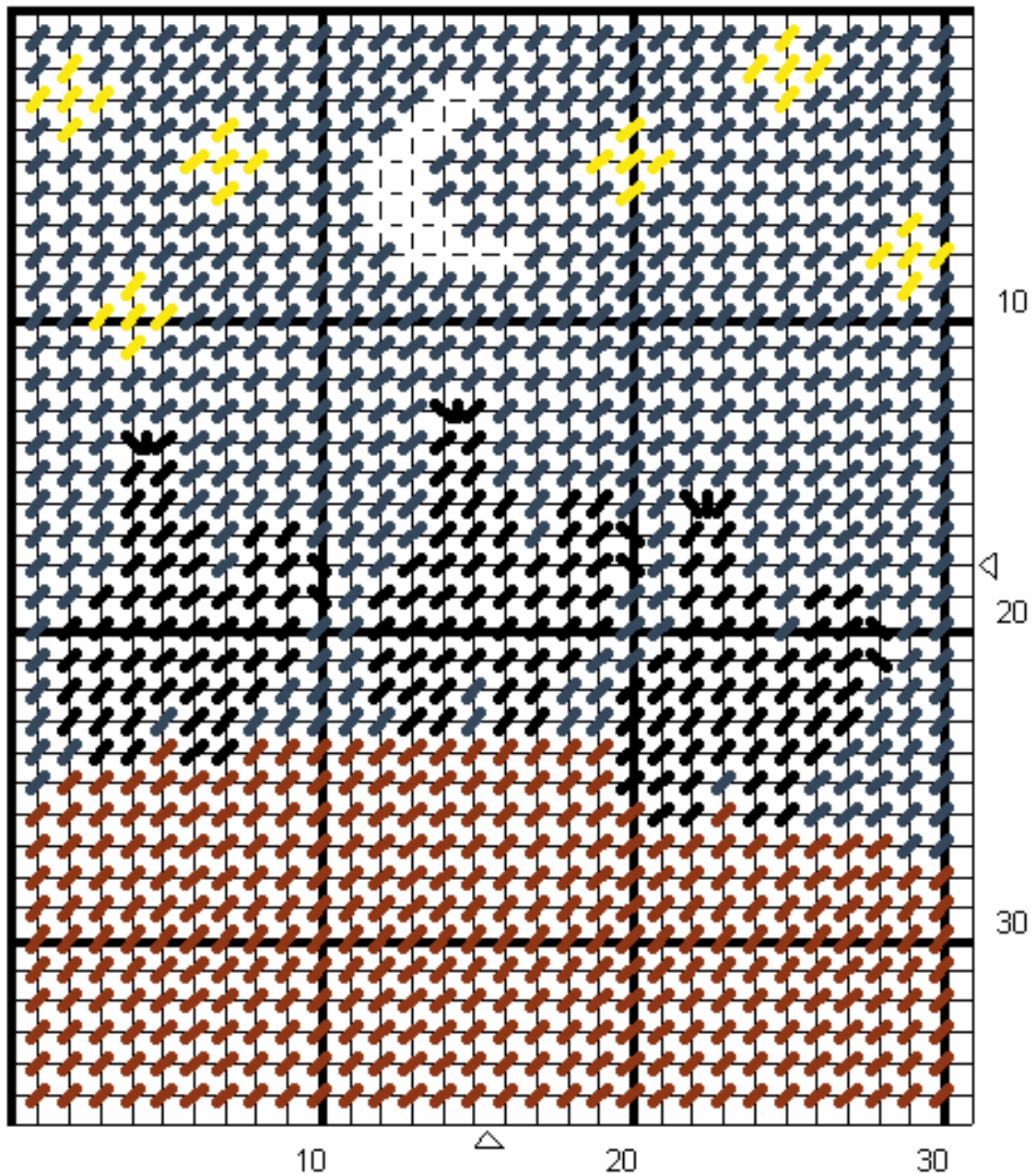
This pattern file consists of four patterns for the four sides of a boutique tissue box cover.

Each side is sized to 32 holes wide by 36 holes high.

The colors suggested (Red Heart colors):

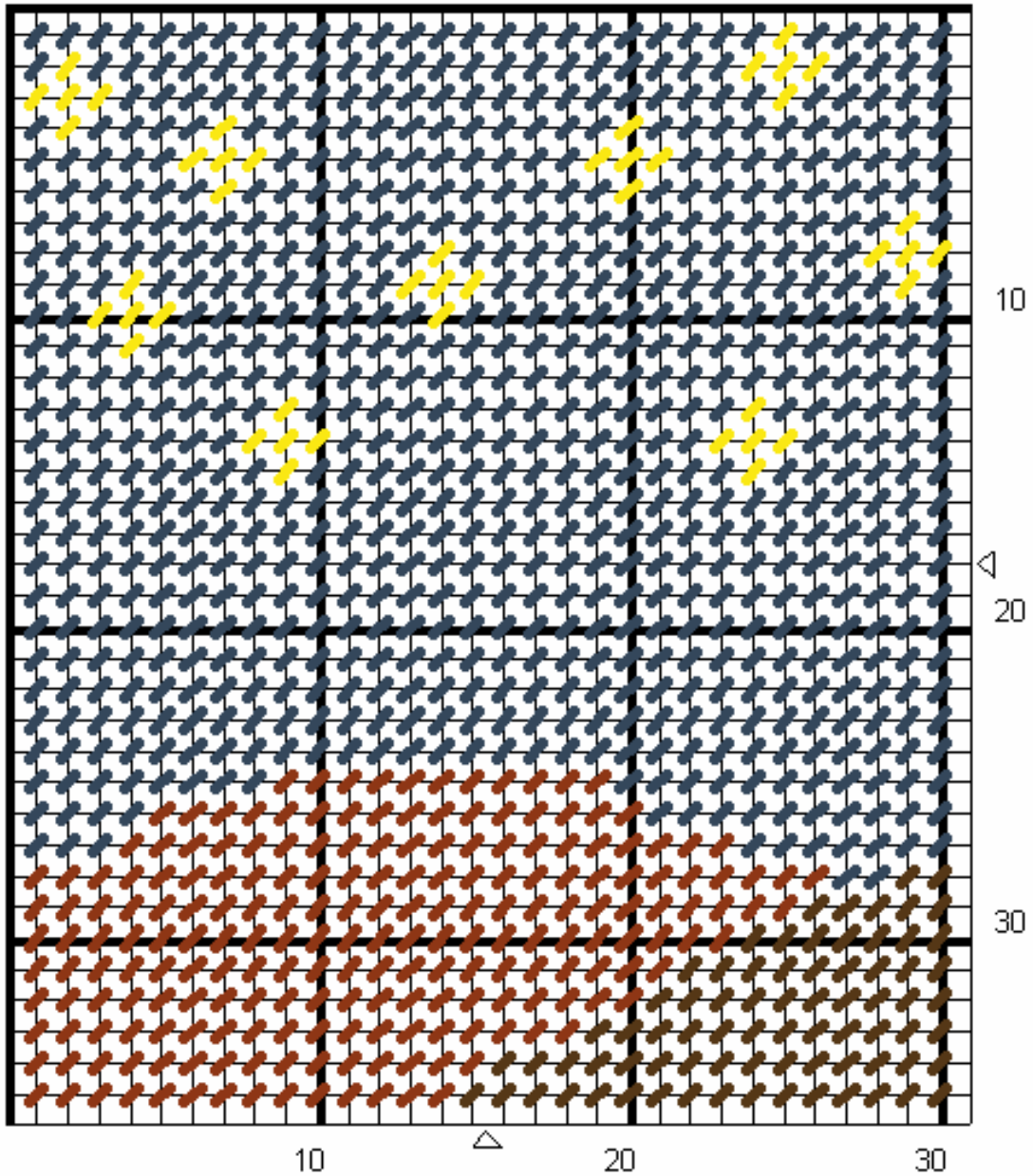
Black, White, Yellow
Windsor Blue (night sky),
Royal Blue,
Brown, Warm Brown (tan),
Pink (light pink, or beige),
Bronze (red-brown),
Copper (med. orange),
Gold (for crowns on 3 wise men)

Bethlehem Tissue Box – Side 1



Colors on this side:
Windsor Blue, White, Black, Yellow,
Bronze (red-brown),
Gold (for crowns, if desired)

Bethlehem Tissue Box – Side 2



Colors on this side:

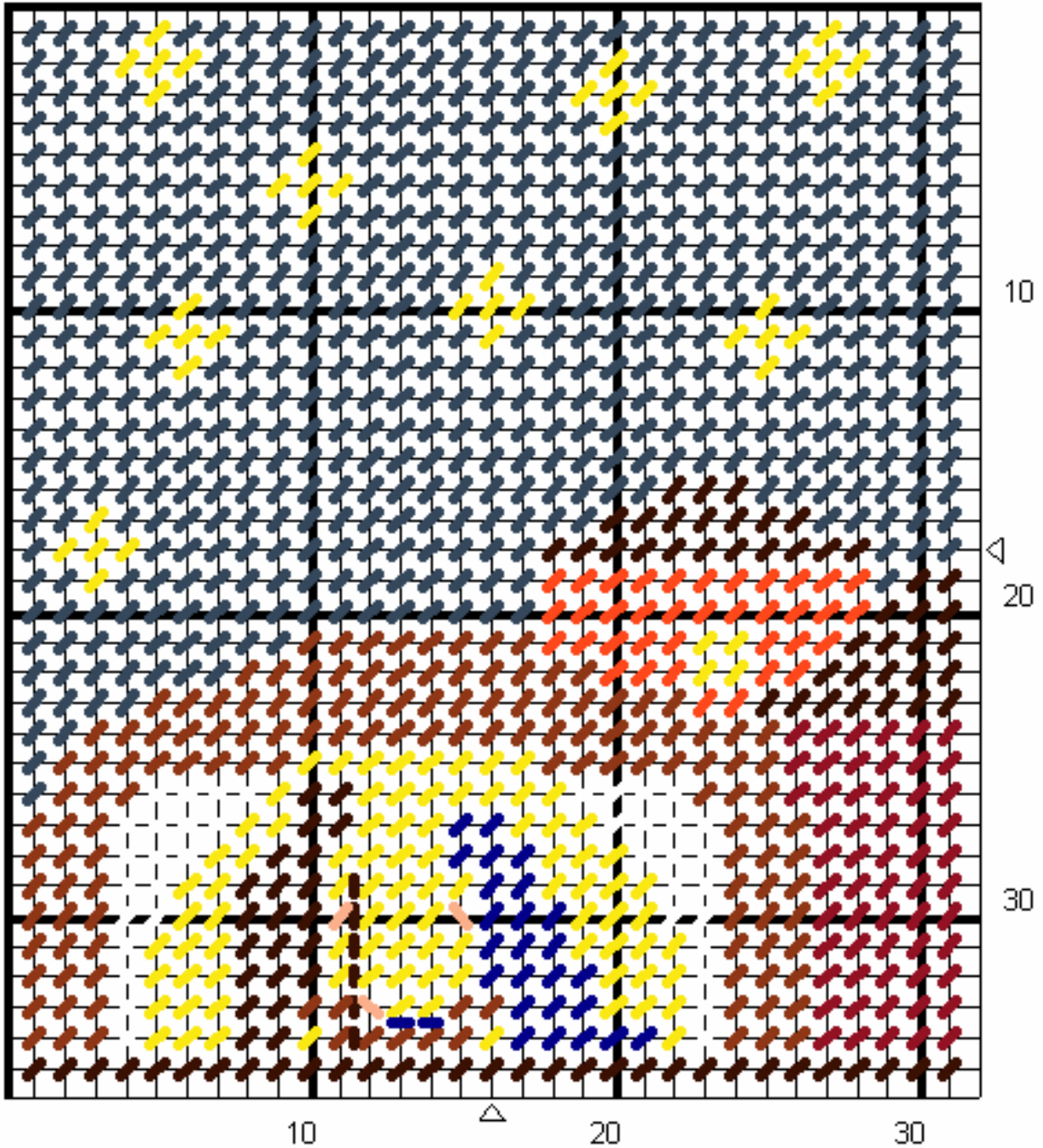
Windsor Blue, Yellow, Bronze, Brown (dark)

Mary Zoellner and Mountain Harmony Creations own the copyright to this pattern.

You may not sell this pattern or offer it to others as your own.

Please refer interested parties to www.mountainharmony.com/crafts/ for this and other MHC patterns.

Bethlehem Tissue Box – Side 3



Colors on this side:

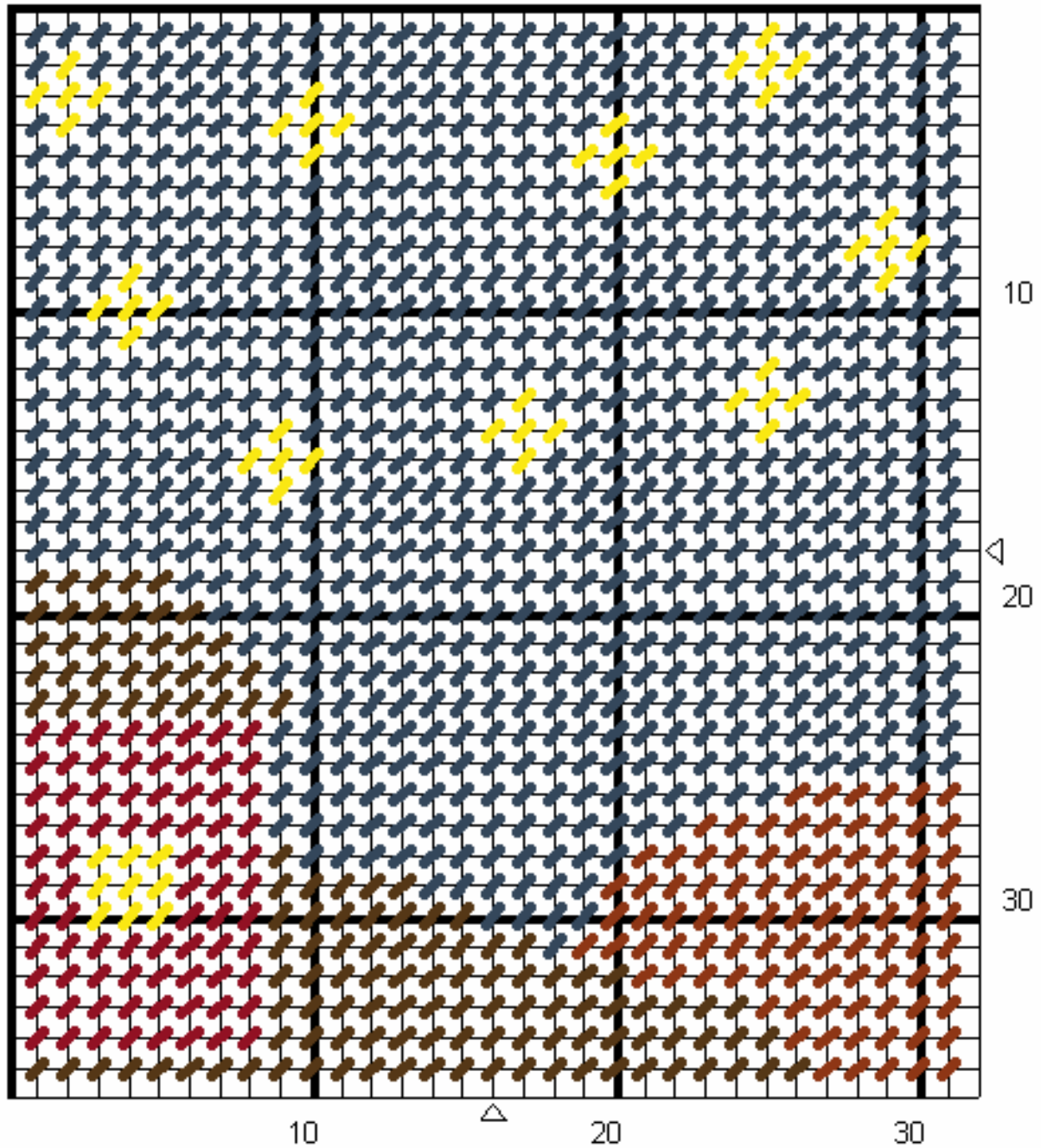
Windsor Blue, Yellow, Bronze (red-brown),
Copper (med. Orange), Brown (dark),
Olympic Blue, Pink (light pink, or beige for hands/face)

Mary Zoellner and Mountain Harmony Creations own the copyright to this pattern.

You may not sell this pattern or offer it to others as your own.

Please refer interested parties to www.mountainharmony.com/crafts/ for this and other MHC patterns.

Bethlehem Tissue Box – Side 4



Colors on this side:

Windsor Blue, Yellow, Bronze (red-brown), Brown (dark)

Mary Zoellner and Mountain Harmony Creations own the copyright to this pattern.

You may not sell this pattern or offer it to others as your own.

Please refer interested parties to www.mountainharmony.com/crafts/ for this and other MHC patterns.