

© Mountain Harmony Creations
Sand Castle Coasters



This pattern is a set of summer coasters in a sand castle holder.

Included in this file are diagrams and instructions for the Sand Castle Holder and four coasters: Umbrella, Sun, Fish, and Sailboat.

(The Sandcastle coaster pattern is not yet available.)

This pattern is an original design from Mountain Harmony Creations. Enjoy!

Mary Zoellner and Mountain Harmony Creations own the copyright to this pattern.

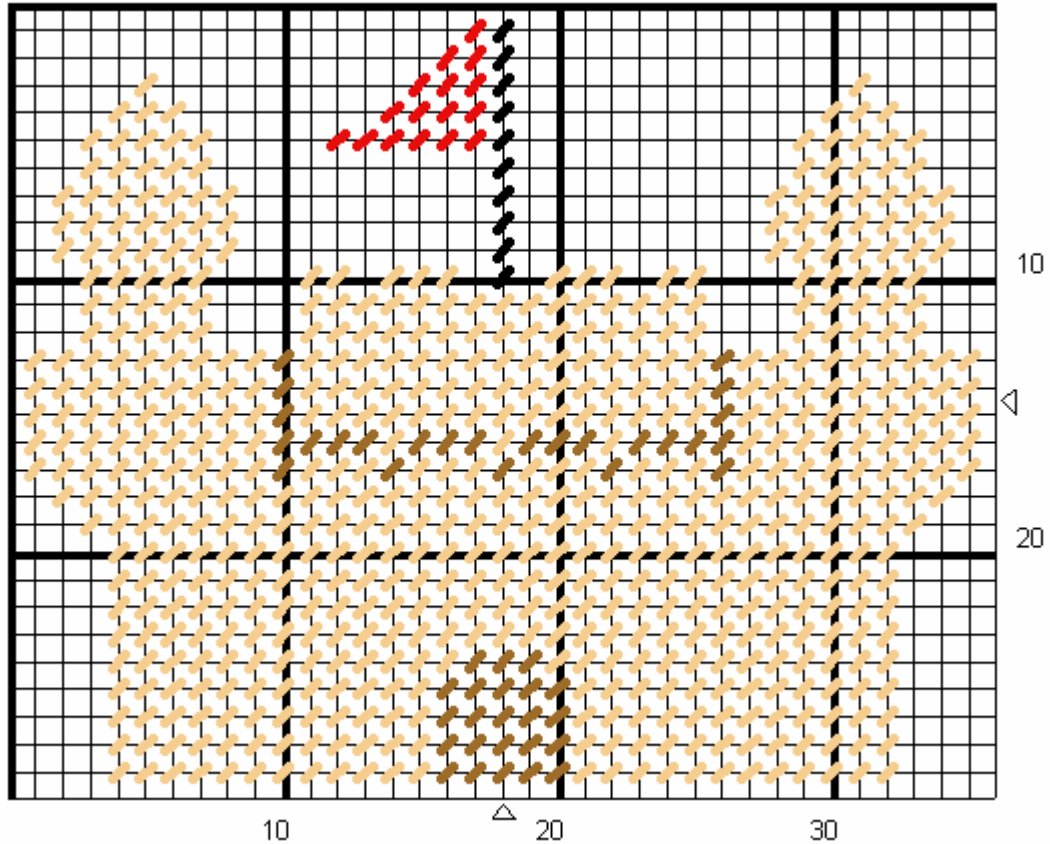
You may not sell this pattern or offer it to others as your own.

Please refer interested parties to www.mountainharmony.com/crafts/ for this and other MHC patterns.

© Mountain Harmony Creations

Sand Castle Coasters

Coaster Holder: Sand Castle (front and back)



Coaster Holder Size: 36 holes wide by 29 holes high

Cut 2. (Cut around stitched area after stitching)

* updated 6/28/2003

Yarn Requirements:

Tan (sand color): 45 yards

Brown: 5 yards

Red: 2 yards

Black: 2 yards

Blue/Green (sea color): 16 yards

Stitching Instructions:

Stitch as diagrammed.

Overcast flagpole

Overcast top of castle & towers with Brown
(to the X's).

Mary Zoellner and Mountain Harmony Creations own the copyright to this pattern.

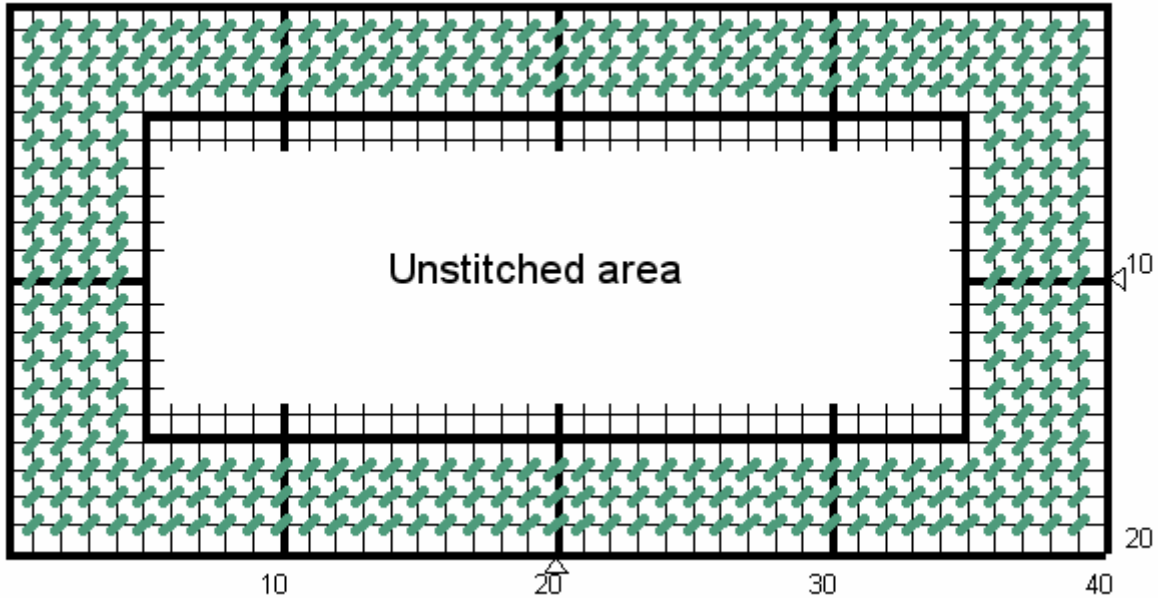
You may not sell this pattern or offer it to others as your own.

Please refer interested parties to www.mountainharmony.com/crafts/ for this and other MHC patterns.

© Mountain Harmony Creations

Sand Castle Coasters

Coaster Holder: Bottom



Coaster Holder Bottom: 40 holes wide by 20 holes high

Cut 1

Coaster Holder Sides: 12 holes wide by 9 holes high

Cut 2

Yarn Requirements:

Included on previous page

Stitching Instructions:

Stitch as diagrammed leaving the inner rectangle unstitched. Overcast the edges with Blue/Green.

Assembly Instructions:

Using overcast stitch, stitch the front, back, and sides to the bottom piece, with Tan (sand).
(Stitch to the outside bar of the inner rectangle, identified by the thick black line.)
Then overcast the sides to the front & back together with Tan (sand).

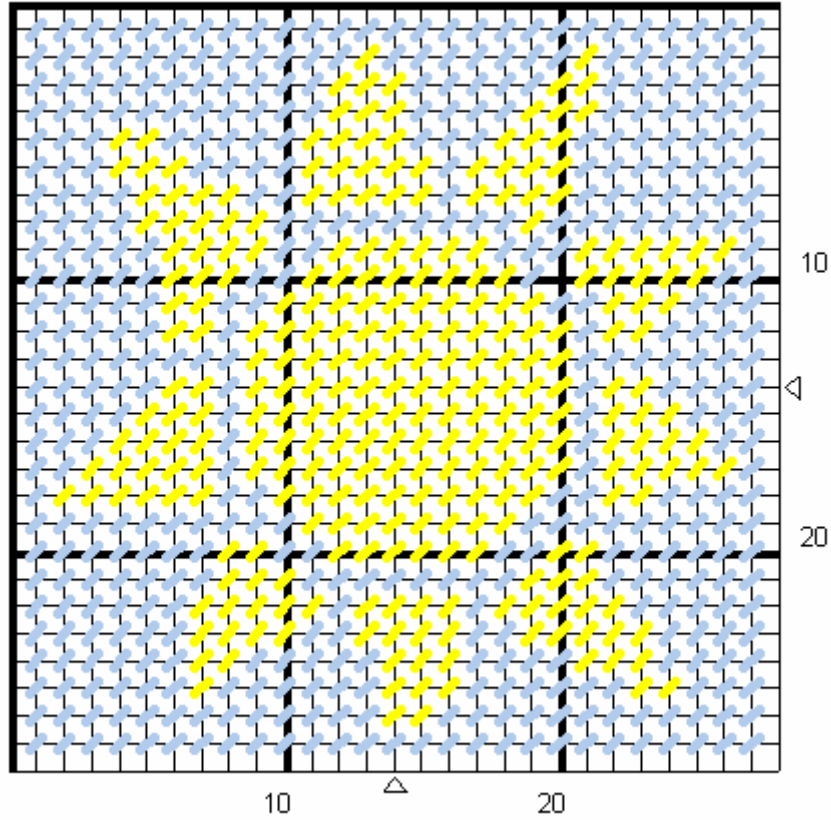
Note: This can be awkward stitching when connecting pieces to the bottom.
Keep the piece lined up as best you can, and go slowly.

Mary Zoellner and Mountain Harmony Creations own the copyright to this pattern.

You may not sell this pattern or offer it to others as your own.

Please refer interested parties to www.mountainharmony.com/crafts/ for this and other MHC patterns.

© Mountain Harmony Creations
Sun Coaster



Sun Coaster: 28 holes wide by 28 holes high
Cut 1

*** Yarn Requirements:**

Blue: 13 yards
Yellow: 8 yards

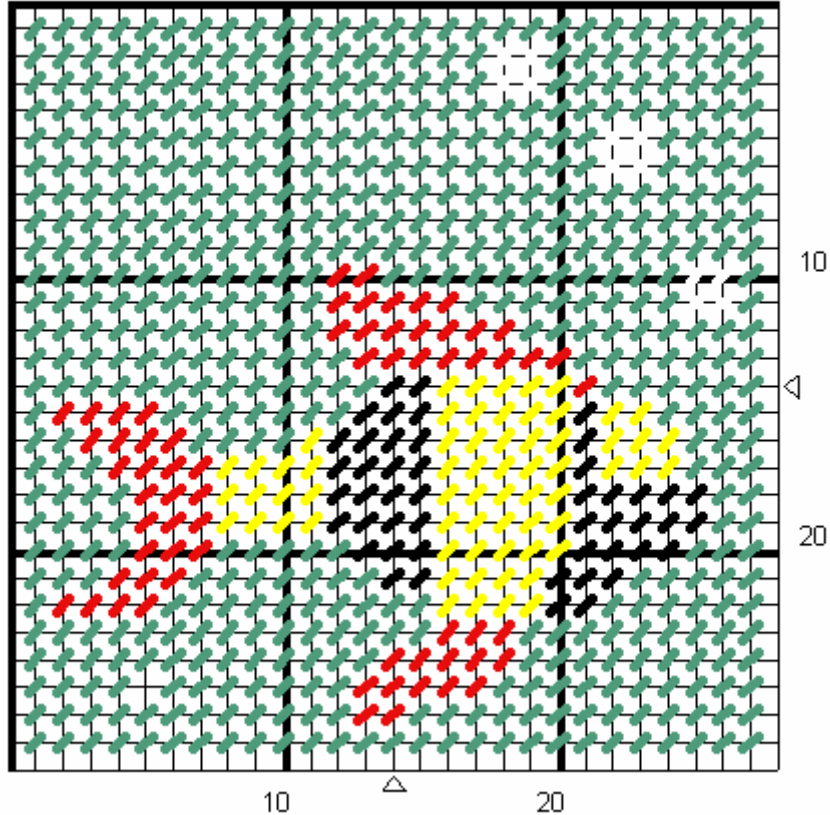
Stitching Instructions:

Stitch as diagrammed.
Overcast in Blue.

If desired, cut another 28 x 28 piece, leave unstitched and stitch (overcast) to the back of coaster for more stability.

* updated 6/18/2003

© Mountain Harmony Creations
Fish Coaster



Fish Coaster: 28 holes wide by 28 holes high
Cut 1

*** Yarn Requirements:**

Blue/Green (sea color): 12 yards
White: 1 yard
Red: 2 yards
Black: 2 yards
Yellow: 2 yards

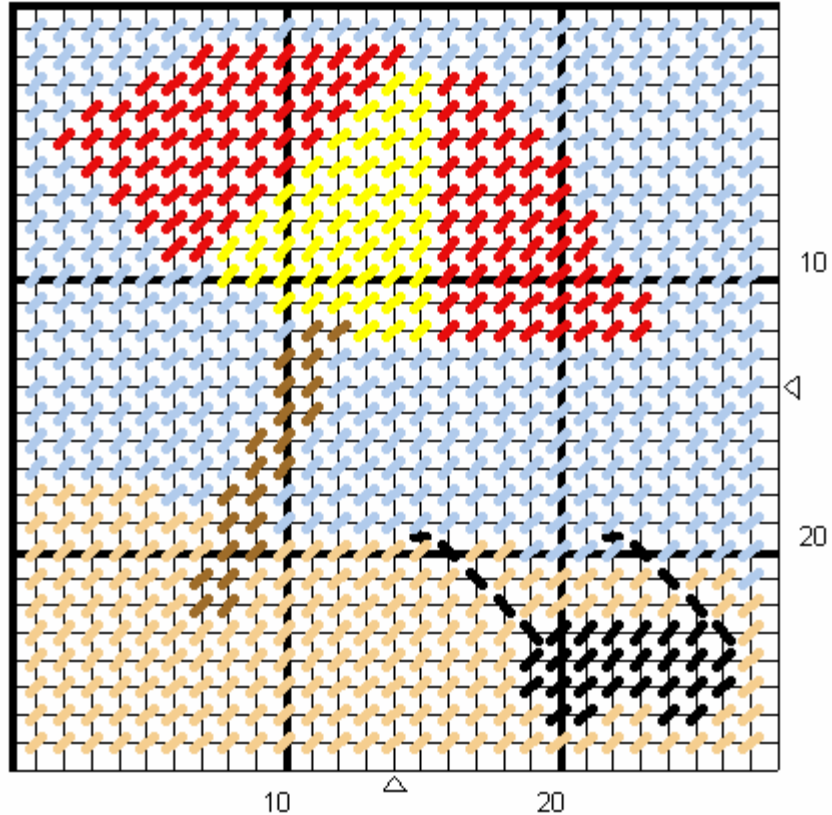
Stitching Instructions:

Stitch as diagrammed.
Overcast in Blue/Green.

If desired, cut another 28 x 28 piece, leave unstitched and stitch (overcast) to the back of coaster for more stability.

* updated 6/18/2003

© Mountain Harmony Creations
Umbrella Coaster



Umbrella Coaster: 28 holes wide by 28 holes high
Cut 1

Yarn Requirements:

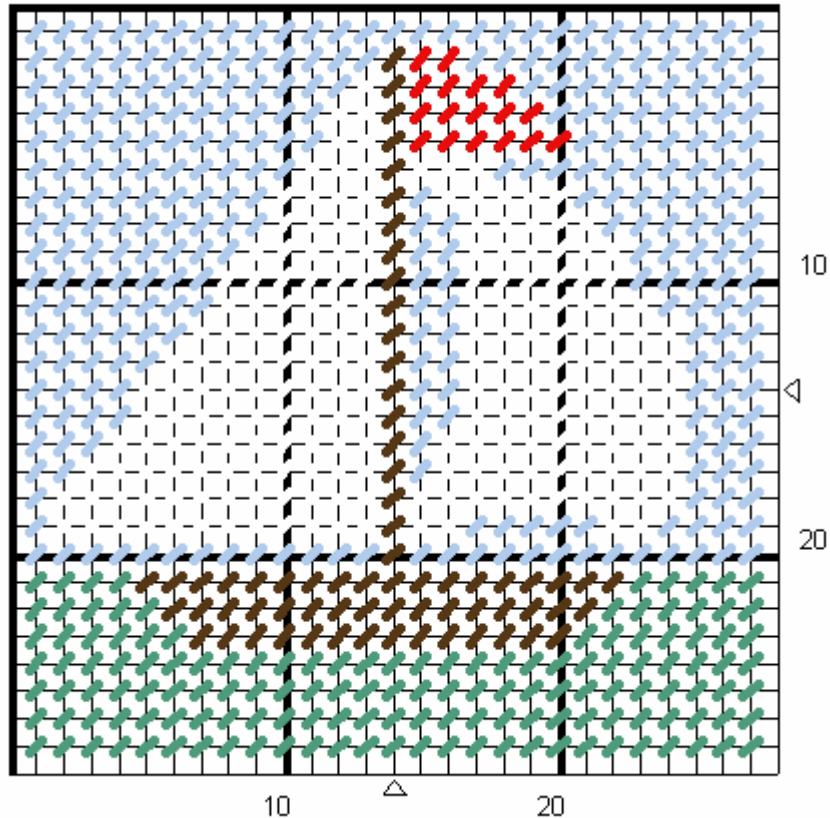
Tan (sand color): 6 yards
Brown: 1 yard
Blue: 10 yards
Red: 3 yards
Black: 1 yards
Yellow: 2 yards

Stitching Instructions:

Stitch as diagrammed.
Overcast in Blue & Tan.

If desired, cut another 28 x 28 piece, leave unstitched and stitch (overcast) to the back of coaster for more stability.

© Mountain Harmony Creations
Sailboat Coaster



Umbrella Coaster: 28 holes wide by 28 holes high
Cut 1

Yarn Requirements:

- Red: 1 yard
- Blue/Green (sea color): 4 yards
- White: 7 yards
- Brown: 2 yards
- Blue: 9 yards

Stitching Instructions:

Stitch as diagrammed.
Overcast in Blue/Green & Blue.

If desired, cut another 28 x 28 piece, leave unstitched and stitch (overcast) to the back of coaster for more stability.