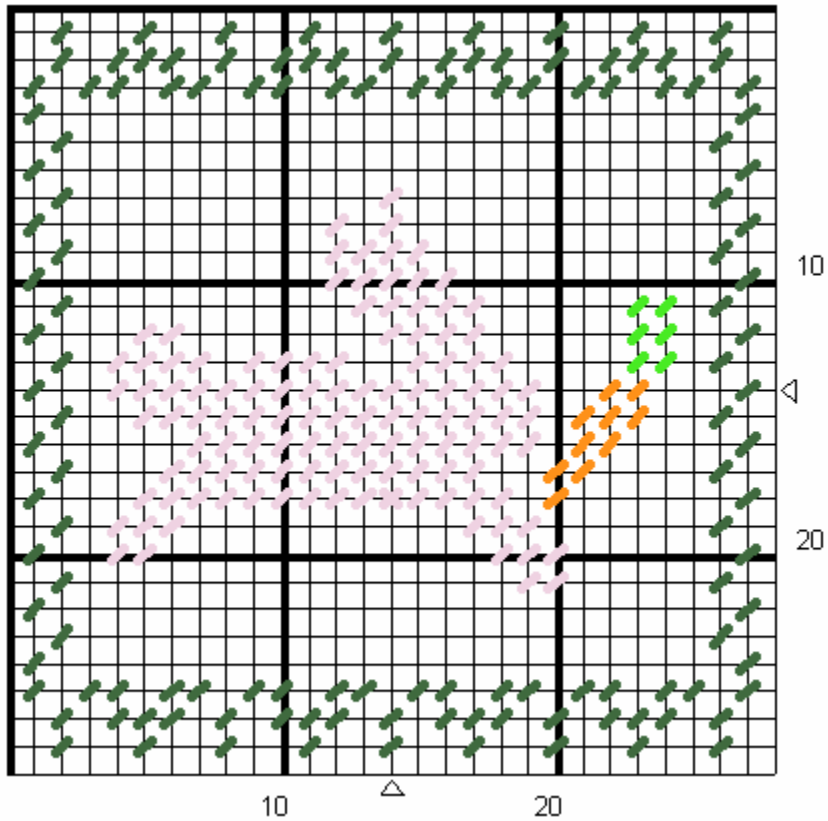


## Bunny & Carrot Coaster



Size: 28 holes wide by 28 holes high

Colors:

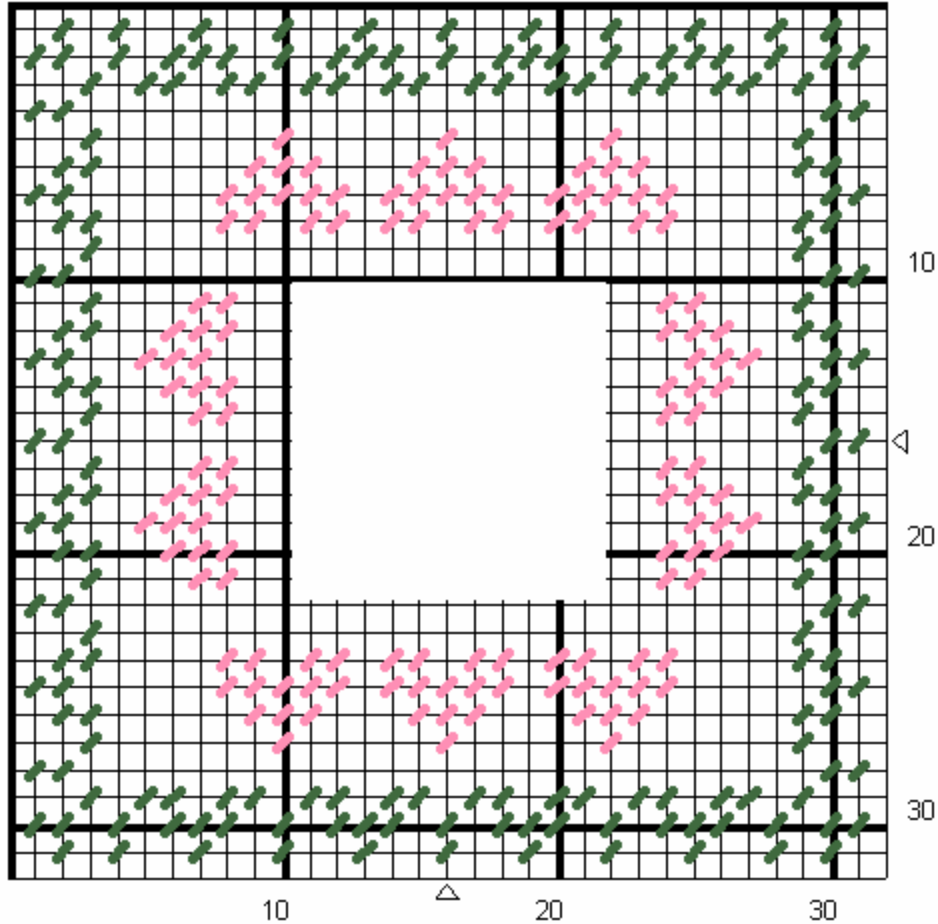
Dark Green, Bright Green, Orange, White (charted as light pink),  
And desired background color.

Stitch as charted.

Fill in background with a contrasting color.

# Bunny & Carrot Tissue Box (boutique style)

Top of box (cut and stitch 1)



Size: 32 holes wide by 32 holes high

Colors:

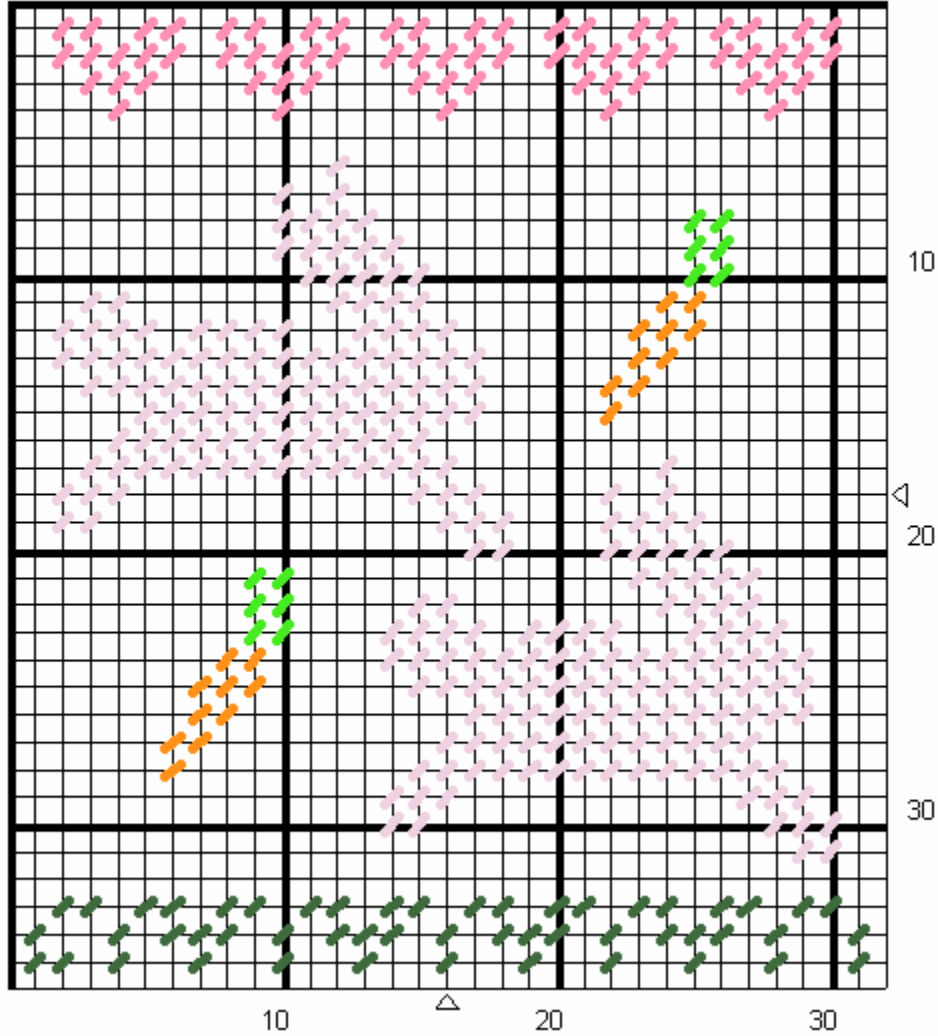
Dark Green, Pink, and desired background color

Stitch as charted.

Fill in background with a contrasting color.

# Bunny & Carrot Tissue Box (boutique style)

Side of box (cut & stitch 4)



Size: 32 holes wide by 36 holes high

Colors:

Dark Green, Bright Green, Orange, Pink, White (light pink on chart),  
and desired background color

Stitch as charted.

Fill in background with a contrasting color.