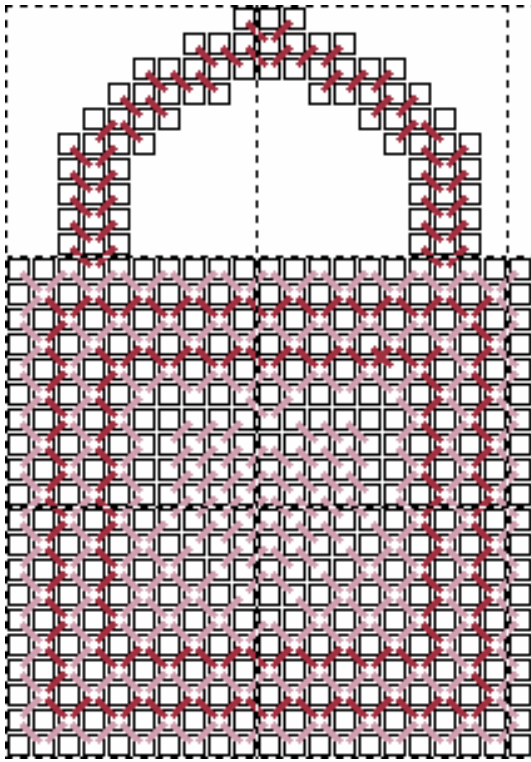
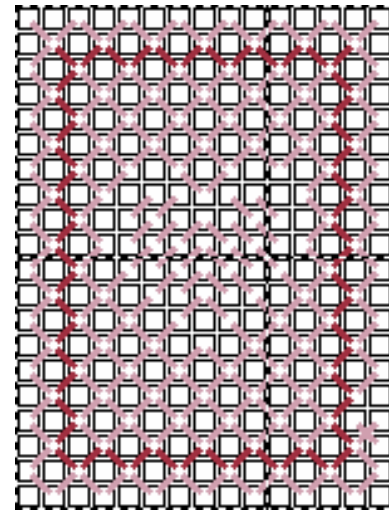


# Heart Bag-sket



Bag-sket Front/Back

21 holes wide by 30 holes high



Bag-sket Side

15 holes wide by 20 holes high

Bag-sket Bottom: 21 holes by 15 holes

---

## Instructions:

**Cut Pieces:** Front/Back – cut and stitch 2

Sides – cut and stitch 2

Bottom – cut 1, leave unstitched

**Stitch pieces:** as diagrammed above.

Then stitch the Rhodes Heart patterns as diagrammed on the following pages.

Using light shade of yarn: overcast handles, attach all 4 sides together with the overcast stitch, and overcast them to the bottom piece.

Mary Zoellner and Mountain Harmony Creations own the copyright to this pattern.

You may not sell this pattern or offer it to others as your own.

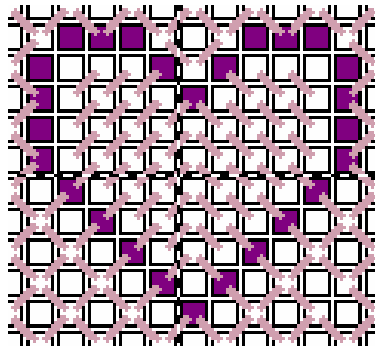
Please refer interested parties to [www.mountainharmony.com/crafts/](http://www.mountainharmony.com/crafts/) for this and other MHC patterns.

# Heart Bag-sket

## Rhodes Heart Pattern for Front & Back

Stitch the Rhodes Heart Pattern over the center grouping of continental stitches on the front and back pieces, using the contrasting (darker) yarn color.

This is the section to be covered with the Rhodes Heart:



Note the darker holes on diagram above correspond to the holes numbered on the following diagram.  
 Stitch from back-to-front (or bottom-to-top) in the odd holes and front-to-back in the even holes.  
 (For example, bring needle up in hole #1 and down in hole #2, up in hole #3, etc..)

	17	19	21				2	4	6	
15				23		25				8
13					27					10
11										12
9										14
	7									16
		5						18		
			3				20			
				1 / 26		22 / 24				
					28					

Mary Zoellner and Mountain Harmony Creations own the copyright to this pattern.

You may not sell this pattern or offer it to others as your own.

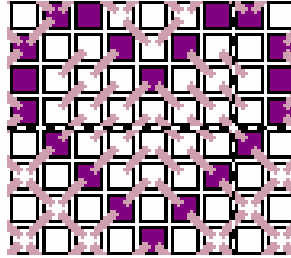
Please refer interested parties to [www.mountainharmony.com/crafts/](http://www.mountainharmony.com/crafts/) for this and other MHC patterns.

# Heart Bag-sket

## Rhodes Heart Pattern for Sides

Stitch the Rhodes Heart Pattern over the center grouping of continental stitches on both of the side pieces, using the contrasting (darker) yarn color.

This is the section to be covered with the Rhodes Heart:



Note the darker holes on diagram above correspond to the holes numbered on the following diagram. Stitch from back-to-front (or bottom-to-top) in the odd holes and front-to-back in the even holes. (For example, bring needle up in hole #1 and down in hole #2, up in hole #3, etc..)

	13	15				2	4	
11			17		19			6
9				21				8
7								10
	5						12	
		3				14		
			1 / 20		16 / 18			
				22				

Mary Zoellner and Mountain Harmony Creations own the copyright to this pattern.

You may not sell this pattern or offer it to others as your own.

Please refer interested parties to [www.mountainharmony.com/crafts/](http://www.mountainharmony.com/crafts/) for this and other MHC patterns.